

DIVISION 10
SECTION 101200

RECESSED TROPHY CASES

With Sliding Doors

Established in 1938, A-1 Visual Systems has been an industry leader and innovator in visual communication products for educational, commercial, governmental, industrial, and institutional applications.

A-1 Visual Systems offers a complete line of high-quality standard or customized products, old-fashioned "caring" customer service and exceptional value.

A-1
VISUAL
SYSTEMS

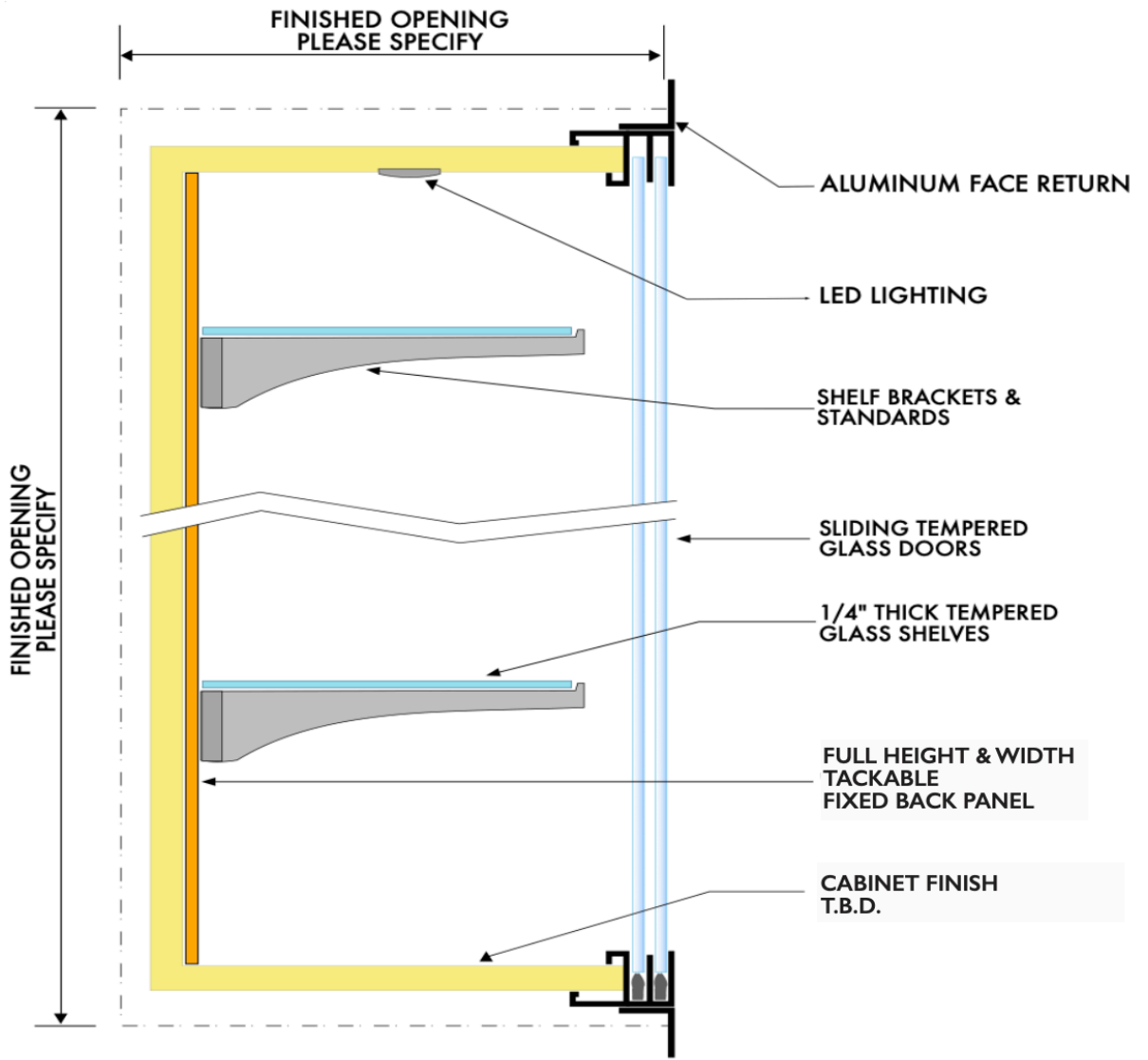
SECTION 101200

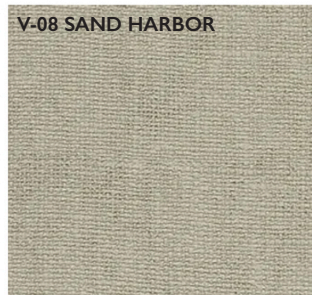
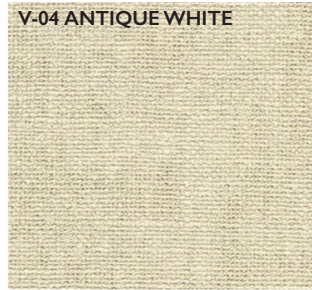
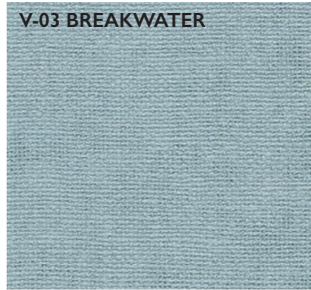
RECESSED TROPHY CASES
With Sliding Doors



A-1
VISUAL
SYSTEMS

RECESSED TROPHY CASES
With Sliding Doors





SPECIFICATION

Style	Harborweave	Performance	
Fabric	Osnaburg	Tensile (Minimum)	50 x 55 lbf
Weight	21.0 oz. ply	Tear (Minimum)	25 x 25
Width	53/54 inch	Federal Spec.	CCC-W-408A, Type II
Repeat	None	CFFA Spec.	CFFA-W-101-D, Type II
Matching Info	Random match, reverse hang		

Cleaning

Normal cleaning should be done with mild ingredients such as soap detergent and water. If sustained and stronger cleaning is required, liquid household cleaners such as Lestoil should be used. Rinse with clean water and dry with absorbent cloth. Stains should be removed as quickly as possible as time is especially important for removing material containing colors or solvents such as ball point ink, nail polish, lipstick, paint...

Fire Testing

NFPA 101 Life Safety Code
 NFPA255 (UL723, CA S102M) Tunnel test1
 Type 1 Class A Rating
 NFPA 286 Corner Burn Test2
 Meets requirements for Flame Spread,Smoke Developed and Flashover
 UL Labeled and Listed

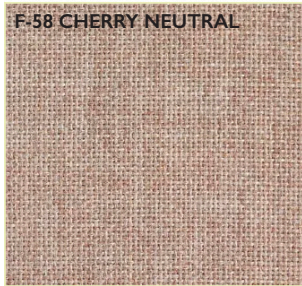
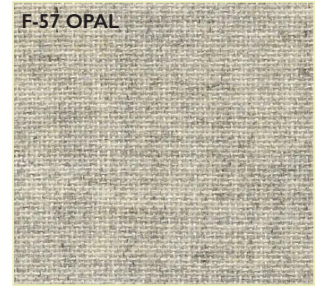
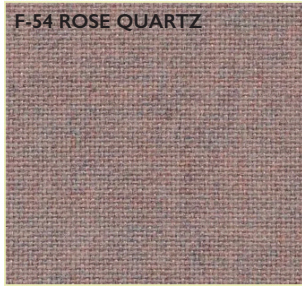
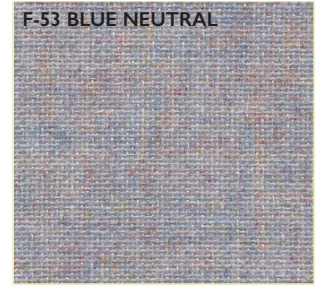
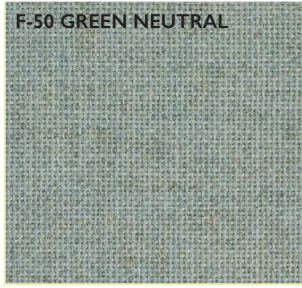
100% water-based inks/Cadmium Free

Vinyl wall-coverings are treated with an antimicrobial to resist the growth of mildew and bacteria.

Other fabric colors and patterns are available.

Color and pattern may vary from monitor to monitor.
 Actual samples available upon request.

Colors may vary slightly between dye lots.



SPECIFICATION

Style 2100
 Contents 100% Post consumer recycled polyester
 Weight 16.5 oz/lineal yard
 Width 66" minimum useable
 repeat None

Performance

Breaking strength 150 lbs. min. warp and fill
 (ASTM D5034)
 Tear (ASTM D2261) 30lbs. min. warp and fill
 Colorfastness to light 40 hrs. min.
 (AATCC 16 Option 3)
 Colorfastness to crocking class 4 min. dry
 (AATCC 8) class 3 min. wet

Cleaning

W-S
 Fabric may be cleaned with mild, water-free solvents or water-based cleaning agents or foam.

Acoustical Performance

The net change in Noise Reduction Coefficient (NRC) when an acoustical panel core is covered with FR701 ranges from NRC 0.00 to 0.05

Flammability

ASTM E-84 Class 1 or A

Colors may vary slightly between dye lots.

Other fabric colors and patterns are available.



SPECIFICATION

Construction

Linoleum resilient homogeneous tackable surface material shall be of natural materials consisting of linseed oil, granulated cork, resin binders and dry pigments, mixed and calendared onto a natural jute backing. Uni-Color shall extend throughout thickness of material.

Contains no harmful by-products or carcinogens.

Flexibility

Will not crack or break when bent around a 2 3/4' diameter cylinder.

Fire Resistance

ASTM E-84 (Final Contribution) - Class B
NFPA 253 (Critical Radiant Flux) - Class II

Performance

Due to the natural burlap backing providing a strong durable foundation, the product is dimensionally stable in all directions when properly installed. It resists cracking, drying and peeling.

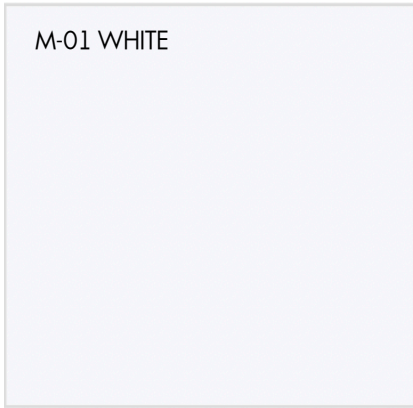
Cleaning

Bulletinboard's Linoleum surface, provides for a washable finish to retain original appearance. The surface can be wiped or washed using any common pH neutral cleaning method (pH 7-8.5). Simply rinse with water after cleaning.

Performance

Due to the natural burlap backing providing a strong durable foundation, the product is dimensionally stable in all directions when properly installed. It resists cracking, drying and peeling.

Color may vary from monitor to monitor
Actual samples available upon request.



M-01 WHITE



M-02 LIGHT GRAY



M-03 BEIGE

SPECIFICATION

Ceramic-Steel markerboard surfaces combine an excellent erasability with wear resistance, durability and product **lifetime warranty**. Proper use and maintenance will keep your board looking like new

Magnet Capability

The CeramicSteel surfaces are ideal for all magnets and magnetic impregnated materials and will not be scratched or damaged from the contact.

Flame Resistant

The Ceramic-Steel surface is 100% non-combustible.

CeramicSteel Cleaning Instructions

Before the first use of your CeramicSteel

If present, remove the protective film.

Wipe board with a clean cloth moistened with a high-quality whiteboard cleaner.

Wipe surface dry with a clean cloth.

Daily cleaning instructions for your CeramicSteel:

Wipe surface with a clean cloth moistened with warm water.

Wipe surface dry with a clean cloth.

Weekly cleaning instructions for your CeramicSteel:

Wipe surface with a clean cloth moistened with a high-quality whiteboard cleaner.

Wipe surface dry with a clean cloth.

Surfaces used moderately should be cleaned two to three times per week. Surfaces used more intensely may require daily cleaning.

Note: *Using an inappropriate cleaner may result in poor dry erase quality due to the buildup of residue from the cleaner on the surface.*



Standard aluminum finish is satin silver, bronze or black anodized finishes are optional.

Custom colors and finishes are also available.

Color may vary from monitor to monitor.
Actual samples available upon request.



Wood is a natural material, slight variations occur in color, grain configuration, and stain acceptance. Finished pieces may vary slightly in tone or character from these samples, and no guarantee can be made of an exact match.

Custom colors and finishes are also available.

Color may vary from monitor to monitor.

PART 1 – GENERAL

1.1 SUMMARY

- A. Section Includes:
 - 1. Illuminated display cases.

1.2 DEFINITIONS

- A. Display Case: Glazed cabinet with visual display surface background and adjustable shelves.

1.3 ACTION SUBMITTALS

- A. Product Data: For each type of product indicated.
- B. Shop Drawings: For display cases. Include plans, elevations, sections, details, and attachments to other work.
 - 1. Show location of seams and joints in visual display surfaces.
 - 2. Include sections of typical trim members.
 - 3. Wiring Diagrams: For power, signal, and control wiring.
- C. Samples: For each exposed product and for each color and texture specified.

1.4 CLOSEOUT SUBMITTALS

- A. Maintenance Data: For visual display surfaces, operating hardware, and illuminated units to include in maintenance manuals.

1.5 QUALITY ASSURANCE

- A. Surface-Burning Characteristics: As determined by testing identical products according to ASTM E 84 by a qualified testing agency. Identify products with appropriate markings of applicable testing agency.
 - 1. Flame-Spread Index: 25 or less.
 - 2. Smoke-Developed Index: 450 or less.
- B. Electrical Components, Devices, and Accessories: Listed and labeled as defined in NFPA 70, by a qualified testing agency, and marked for intended location and application.

2.1 MATERIALS

- A. Hardwood Plywood: HPVA HP-1, made with adhesive containing no urea formaldehyde.
- B. Plastic-Impregnated Cork Sheet: Seamless, homogeneous, self-sealing sheet consisting of granulated cork, linseed oil, resin binders, and dry pigments that are mixed and calendared onto burlap backing; with washable vinyl finish and integral color throughout.
- C. Extruded-Aluminum Bars and Shapes: ASTM B 221, Alloy 6063.
- D. Aluminum Tubing: ASTM B 429, Alloy 6063.

DISPLAY CASES

- E. Clear Tempered Glass: ASTM C 1048, Kind FT, Condition A, Type I, Class 1, Quality Q3, with exposed edges seamed before tempering, and 6 mm thick unless otherwise indicated.
- F. High-Pressure Plastic Laminate: NEMA LD 3.
- G. Fasteners: Provide screws, bolts, and other fastening devices made from same material as items being fastened. Provide types, sizes, and lengths to suit installation conditions. Use security fasteners where exposed to view.
- H. Adhesives: Manufacturer's standard product that complies with the testing and product requirements of the California Department of Health Services' "Standard Practice for the Testing of Volatile Organic Emissions from Various Sources Using Small-Scale Environmental Chambers."

2.2 DISPLAY CASE

- A. Basis-of-Design Product: Recessed Trophy and Display Cases. As manufactured by A-1 VISUAL SYSTEMS, 16221 S. Maple Avenue, Gardena, CA 90248 800/423-3386

<mailto:sales@a-1visualsegments.com>

1. Size: As indicated on Drawings.
 2. Depth: As indicated on Drawings.
- B. Recessed Cabinet: Factory-fabricated cabinet; with tackboard assembly on back inside surface, operable glazed doors at front, and trim on face to cover edge of recessed opening.
1. Cabinet Box: Plastic-laminate-clad plywood. Color and pattern selected by Architect from manufacturer's full range.
 2. Cabinet Frame and Trim: Aluminum (Satin Anodized Finish)
 3. Aluminum Finish: Clear anodic.
- C. Glazed Hinged Door(s): Tempered glass; framed; with extruded-aluminum, cam-lock with two keys.
1. Thickness: Not less than 6 mm thick.
 2. Number of Doors: One or more as required.
- D. Shelves: 8-mm-thick tempered glass; supported on adjustable shelf standards and supports.
1. Shelf Width: Per detail drawing.
 2. Number of Shelves: Per detail drawing.
- E. Adjustable Shelf Standards and Supports: Recess mounted in rear surface.
- F. Tack Surface: Natural textured cork tackboard assembly.
1. Vinyl-Covered Tackboards: Colors selected by Architect from manufacturer's standard colors.
- G. Illumination System: Concealed top-lighting system consisting of LED fixtures. Include lamps and internal wiring with single concealed electrical connection to building system. Coordinate electrical characteristics with power supply provided.

DISPLAY CASES

- A. Fabricate display cases to requirements indicated for dimensions, design, and thickness and finish of materials.
- B. Use metals and shapes of thickness and reinforcing to produce flat surfaces, free of oil-canning, and to impart strength for size, design, and application indicated.

2.3 FABRICATION

- A. Fabricate cabinets and door frames with reinforced corners, mitered to a hairline fit.
- B. Fabricate shelf standards plumb and at heights to align shelf brackets for level shelves.

2.4 ALUMINUM FINISHES

- A. Clear Anodic Finish: AAMA 611, AA-M12C22A31, Class II, 0.010 mm or thicker.

PART 3 - EXECUTION**3.1 INSTALLATION**

- A. General: Install units in locations and at mounting heights indicated on Drawings. Reassemble display knocked-down display case at Project site according to manufacturer's instructions.

- B. Keep perimeter lines straight, level, and plumb. Provide grounds, clips, backing materials, adhesives, brackets, anchors, trim, and accessories necessary for complete installation.
- C. Recessed Display Cases: Attach units to wall framing with fasteners at not more than 16 inches o.c. Attach aluminum trim over edges of recessed display cases and conceal grounds and clips. Attach trim with fasteners at not more than 24 inches o.c.
- D. Install display case shelving level and straight.
- E. Adjust doors to operate smoothly without warp or bind and so contact points meet accurately. Lubricate operating hardware as recommended by manufacturer.

END OF SECTION 101200

EQUIPMENT REQUIRED:

#2 Philips Head Screwdriver - Power Drill & Bits - Level

Hardware to mount Box to Wall (not included)

1. Coordinate with an electrician to ensure that they have run appropriate wiring when required. Drill holes at the appropriate area of the case box for proper wiring entry. Suggest to the electrician a few extra feet of wiring for ease of running.
2. Remove the doors & set aside. Lay the case down on the ground with the back down, door side up.

NOTE:

- Properly securing the case depends on the configuration of the wall. Plan to install case screws into available blocking whether it's into the case uprights (left & right jams) OR thru the bottom & the top instead of the uprights.
 - Depending on the size of the case, it is also recommended to remove the modular shelving standards & install screws thru the back panel to the wall. (using screws that can be covered by the modular standards)
 - Depending on the configuration of the wall you may need to attach thru the bottom & the top instead of the uprights.
3. Lift the case carefully by the box. the case should NOT be set upright on the floor. Sit the case into the opening. Pull wiring into the case (when required). Push back onto the opening.

Use the level & shims to properly seat the case. (if needed)

4. Plan to drill thru the case front behind the back track at a maximum 16 inches apart & into available blocking with appropriate drill bit starting near the corners.

NOTES: #8 or #10 pan head screw with minimum 2 1/2" long recommended. Make certain that the screws do not interfere with the wall rough opening. Countersink holes if using a flat head screw.

5. Install screws. Install shelving brackets & glass. Clean the area to complete the installation.

A-1 Visual Systems' products are warranted to the original purchaser for a period of one year from the due date of purchase against defects in the material or workmanship as to the board/cabinet components. The word "defect," as used in this warranty, is defined as imperfection which impairs the utility of this product.

This warranty is expressly limited to the replacement of board/cabinet components having defects. If the board/cabinet is defective within the terms of the warranty A-1 Visual Systems will furnish a replacement board/cabinet component at no cost. No assembly labor is included.

All A-1 Visual Systems' Porcelain-On-Steel writing surfaces are guaranteed not to wear for the life of the building in which it was originally installed.

This warranty applies under conditions of normal use, but does not apply to defects that result from intentional damage, negligence and unreasonable use or exposure.

All implied warranties arising under state law are limited in duration to the one year period of those warranty. Some states do not allow limitations on how long an implied warrant last, so the above limitations may not apply to you.

Liability for incidental or consequential damages excluded to the extent exclusions is permitted by law. Some states do not allow the exclusions or limitations of incidental or consequential damages, so the above limitation or exclusions may not apply to you.